

# 'Mallow's Parlour' scoops national design accolade

**BILL BROWNE**

THE daring design of the Thomas Davis Square in Mallow has proven to be a hit with the public after it was voted as being among the top three architectural works in the country.

The Square, a key element of the ambitious Mallow Urban Heritage Masterplan, was among more than 50 projects short-listed for the prestigious annual **Royal Institute of Architects** of Ireland (RIHI) Public Choice Award.

More than 14,000 votes, the highest number ever received in the competitions history, were cast online with the Mallow Square finishing in a creditable third place on the pecking order.

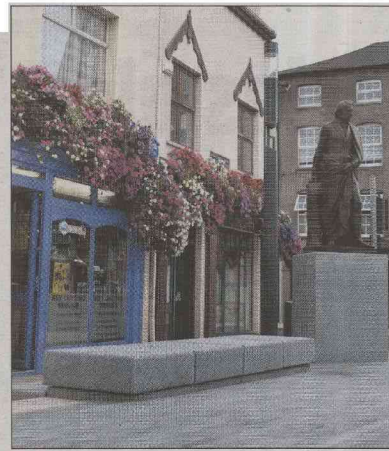
Top spot went to the Public Space and Sculpture in Westport, with the Holyhill Library in Cork City grabbing the runner-up spot.

The eye-catching Thomas Davis Square was designed by Mallow Town architect Giulia Vallone, who in 2012 when its design was unveiled that it would become the "town's parlour."

Mallow TD Sean Sherlock was among the first to welcome the success after the results were announced live on the RTE 1 'Morning Ireland' radio show on Wednesday.

"This is a great success story for Mallow and one that will boost the profile of the town, of that I have no doubt. I have met with Giulia Vallone on a number of occasions and have seen at first hand her passion for sustainable architecture in the town of Mallow," said Deputy Sherlock.

"I want to pay tribute to all the stakeholders involved, especially the team at the Mallow Development Partnership. To secure third place in a prestigious nationals competition such as this is a significant achievement that should not go unnoticed," he added.

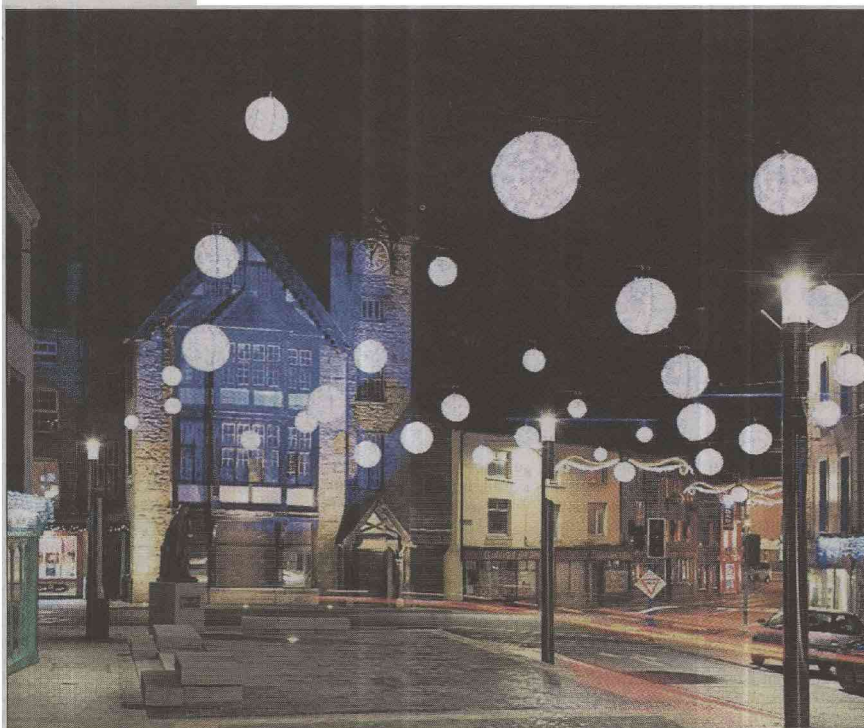


**Left: The bronze statue of the Mallow-born patriot Thomas Davis, which was officially unveiled by President Higgins during his visit to the town in 2014, overlooking the square named in his honour.**

## The Corkman



**Above: A panoramic view of Thomas Davis Square with the landmark Clockhouse building, which is currently in the process of being refurbished, in the background.**



**Right: The plaza provided the perfect backdrop to the enhanced lighting installed for Christmas 2015.**